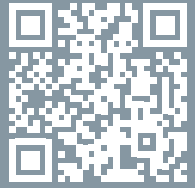


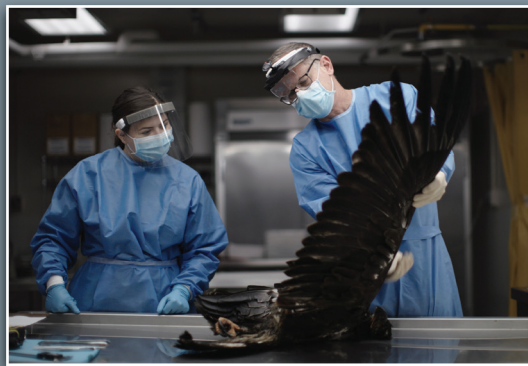
Wildlife Health and Disease Management



Excise taxes paid by manufacturers and importers of firearms, ammunition, archery, and angling equipment via Pittman-Robertson and Dingell-Johnson fund wildlife and fish health research laboratories, support health monitoring field work, disease surveillance, and support many disease and health projects. These projects funded across our Nation support the continuation of sustainable species management and healthy populations. Thanks to our partners, fish and wildlife health has remained a top priority, nationwide.

Pittman-Roberston

138
grants
monitoring diseases



\$66
million
total disease focused
funding in 2021-2023



38
laboratories
funded through PR



Dingell-Johnson

53
grants
monitoring diseases

\$12
million
total disease focused
funding in 2021-2023

12
laboratories
funded through DJ

THESE PROJECTS ARE SUPPORTED by the Office of Conservation Investment and the following partners:



Office of
**CONSERVATION
INVESTMENT**



NSSF
The Firearm Industry
Trade Association



affta
AMERICAN FISHING TRADE ASSOCIATION

NMMA

